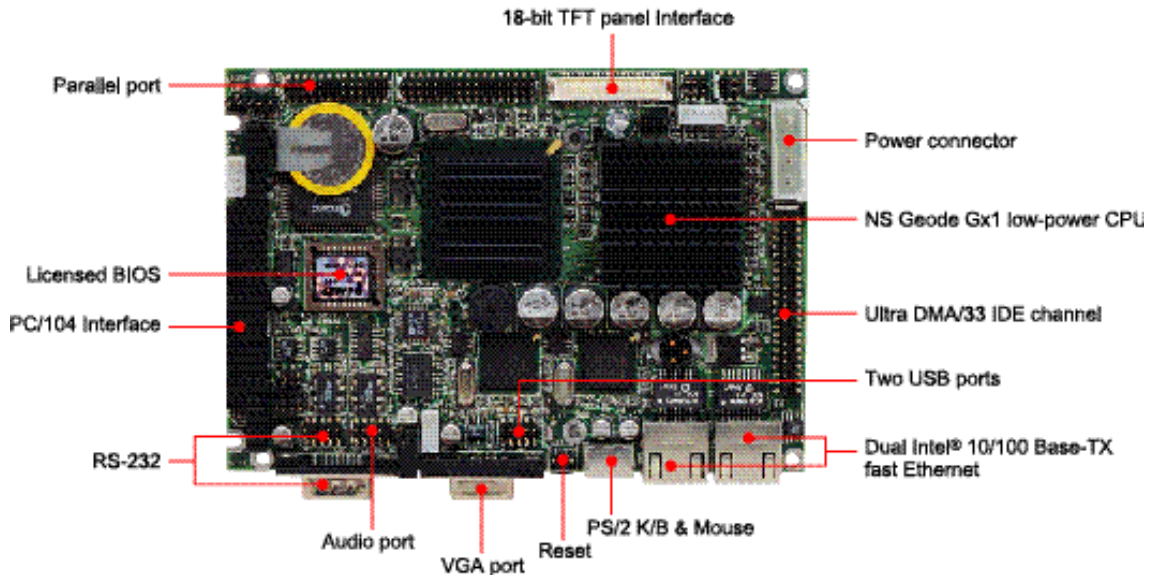


ROBO-503

NS GX1 Processor Based 3.5" Embedded SBC with CRT/LCD, Dual Ethernet and Audio



- ◆ On-board NS Geode GX1 BGA CPUs
- ◆ NS Geode CS5530A support CRT and 18-bit TFT panels
- ◆ 3.5" FDD SubCompact form factor
- ◆ Support type II compact flash disk
- ◆ Dual Intel® 82559ER 100 Base-TX fast Ethernet
- ◆ Integrated AC-97 2.0 sound blaster compatible audio
- ◆ 5V only operation
- ◆ PC/104 expansion connector

Specifications

CPU

- ◆ On-board NS Geode GX1 200/300MHz (available in different speeds by special order)
- ◆ BGA package (Capable to support NS Geode GXm, GXLV, and GX1)

Chipset

- ◆ NS Geode CS5530

Memory

- ◆ On-board one 144pin SODIMM socket supports up to 256 MB SDRAM

BIOS

- ◆ Award 256KB FLASH BIOS

On-Board I/O

- ◆ Winbond W83977F-A
- ◆ Two RS-232, one Parallel port
- ◆ Two USB ports, one IrDA interface

Watchdog Timer

- ◆ Generate a system reset, IRQ15 or NMI. Software selectable time-out interval (16 sec. ~ 7666 sec., 30 sec./step)

Power Requirement

- ◆ 5V @ 1.66A w/GX1 200MHz

Board Dimension

- ◆ 150(L) x 100(W) mm (3.5" FDD-size)
- ◆ 5.9"(L) x 3.94"(W)

Operating Temperature

- ◆ 0 to +55°C

Storage Temperature

- ◆ -40 to +75°C

Relative Humidity

- ◆ 5 to 95% non-condensing

Additional Functionality

Flat Panel / VGA Interface

- ◆ NS CX5530
- ◆ Shared display memory up to 4MB
- ◆ Simultaneously display CRT and flat panel

Dual Ethernet Interface

- ◆ On-board dual Intel 82559ER PCI-bus Ethernet controllers
- ◆ PCI 100/10 Mbps, IEEE 802.3U compatible
- ◆ For diskless system

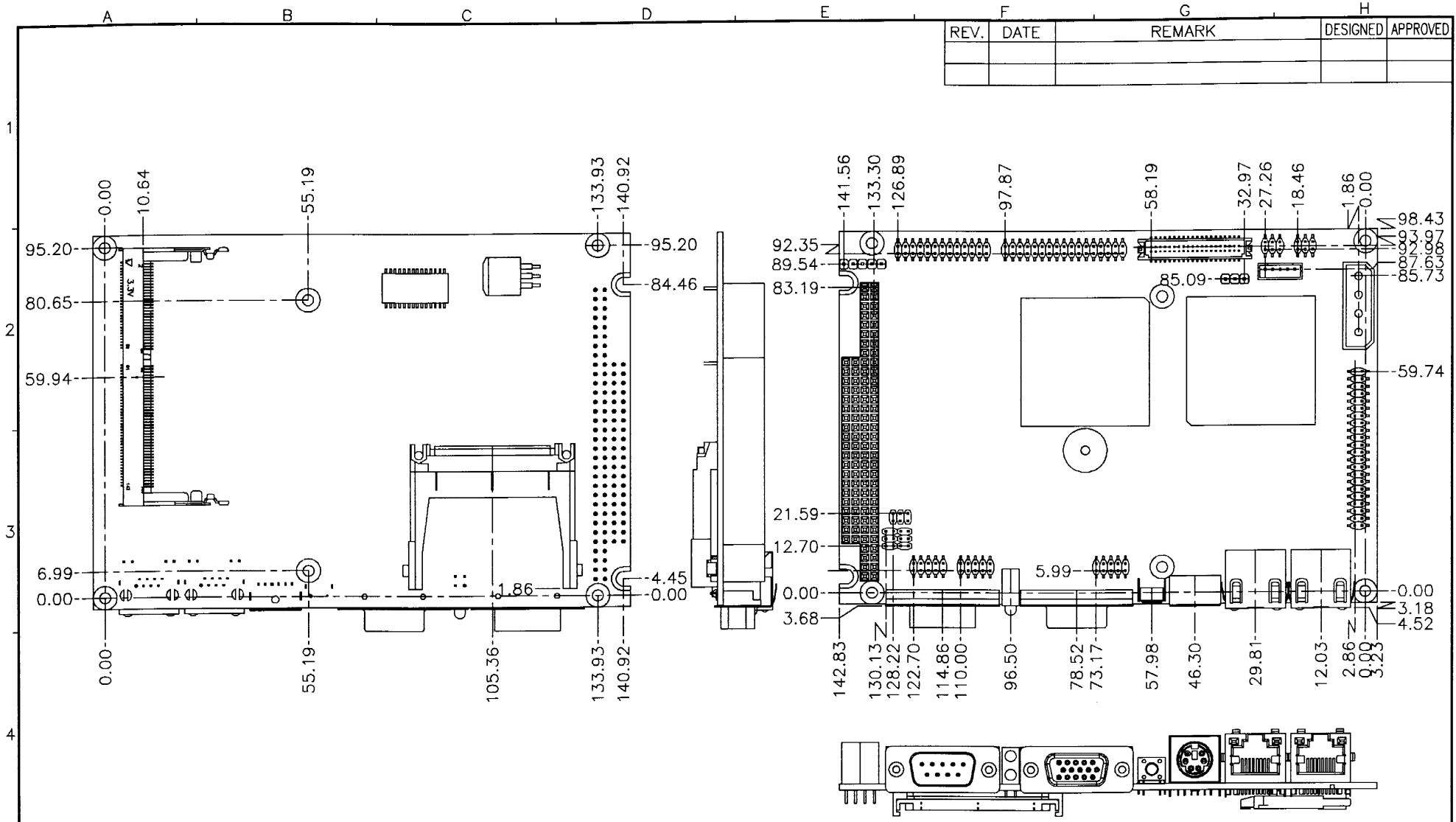
Ordering Guide

ROBO-503

NS GX1 processor based 3.5" embedded system based with CRT/LCD, dual Ethernet and Audio

ROBO-503N

ROBO-503 with single Ethernet



REV.	DATE	REMARK	DESIGNED	APPROVED

