

# PEB-6630VLA/6631VLA

Half-size PCI SBC, based on Intel low power Pentium III or Celeron processor with VGA, LAN and audio

Celeron/Pentium

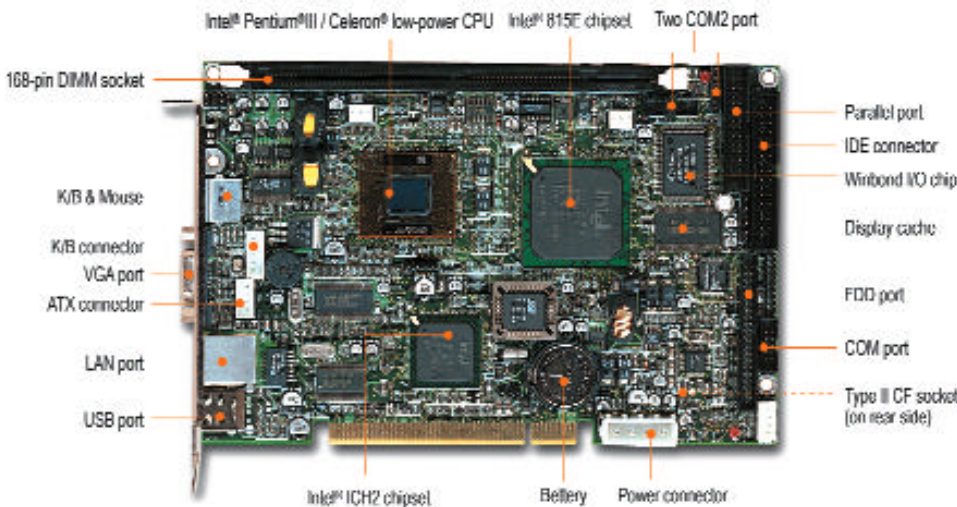
Video

Ethernet

Audio

SSD

PCI Bus



## Feature

- Intel® Pentium® III or Celeron® processor with PSB up to 133 MHz
- Intel® 815E GMCH Integrated graphics controller with 4 MB display cache
- On-board standard VGA, I/O and audio
- On-board RJ-45 for 10BASE-T /100BASE-TX Ethernet
- Up to 512 MB SDRAM on DIMM socket
- Up to four enhanced IDE devices with Ultra DMA/33/66/100
- Type II CF socket for 8-320 MB CompactFlash disk
- Hardware monitoring for CPU, system temperature, operating voltage and fan status

## System

|                                    |                                                                                                                                                         |
|------------------------------------|---------------------------------------------------------------------------------------------------------------------------------------------------------|
| <b>CPU</b>                         | PEB-6631VLA: Intel® Low Power Pentium® III 500MHz (or 400/700Mhz by order)<br>PEB-6630VLA: Intel® Low Power Celeron® 400MHz (or Ultra Low Power 300Mhz) |
| <b>System Memory</b>               | 168 pin DIMM socket support up to PC100/133 512MB SDRAM                                                                                                 |
| <b>2<sup>nd</sup> Cache Memory</b> | 128KB                                                                                                                                                   |
| <b>Chipset</b>                     | Intel® 815E                                                                                                                                             |
| <b>BIOS</b>                        | Award (2Mb Flash ROM)                                                                                                                                   |
| <b>SSD</b>                         | Type II Compact Flash Socket Support up to 320MB CF memory or IBM Microdrive                                                                            |
| <b>Watchdog Timer</b>              | Software programmable with interval resolution from 0.5 seconds to 254.5 Minutes.                                                                       |
| <b>Hardware Monitoring</b>         | Yes                                                                                                                                                     |
| <b>Expansion Interface</b>         | PCI bus through PCI back plane                                                                                                                          |
| <b>Power Consumption</b>           | TBD                                                                                                                                                     |
| <b>Operating Temperature</b>       | 0 to 60°C                                                                                                                                               |
| <b>Storage Temperature</b>         | -20 to +75°C                                                                                                                                            |
| <b>Operating Humidity</b>          | 5 to 95%                                                                                                                                                |
| <b>Dimension</b>                   | 185(L) x 122(W) mm; 7.3"(L) x 4.8"(W)                                                                                                                   |

## I/O

|                 |                                           |
|-----------------|-------------------------------------------|
| <b>MIO</b>      | RS-232 x2, Parallel x1,                   |
| <b>IrDA</b>     | Yes                                       |
| <b>Ethernet</b> | Intel® 815E, 10BASE-T/100BASE-TX, RJ45 x1 |
| <b>Audio</b>    | Yes                                       |
| <b>USB</b>      | 1, (2, factory optional)                  |

## Display

|                        |                             |
|------------------------|-----------------------------|
| <b>Chipset</b>         | 815E                        |
| <b>Memory Size</b>     | 4MB                         |
| <b>Resolution</b>      | 1600x1200 in 8 bit @ 85 MHz |
| <b>LCD interface</b>   | Panel Link                  |
| <b>Video-in/TV-out</b> | N/A                         |

## Notes

Adopt the PCI bus standard is the trend for high performance systems in IPC field, but the market is in a mess since lacking of a well-defined standard for the PCI-based half-sized SBC. The pioneer in this market is necessary to push the trend, so Portwell invest a lot to make this kind of PCI application available on the market.

The advantage of the PCI bus based half-sized SBC is its versatility in applications. There is a smart way to make the PCI bus based half-sized SBC not only being used with backplane, but also a stand-alone system. You can adopt the PCI right angle converter to make the system to be expandable with different PCI add-on cards as attached.



Expand the PCI ESB with converter board

## Ordering Guide

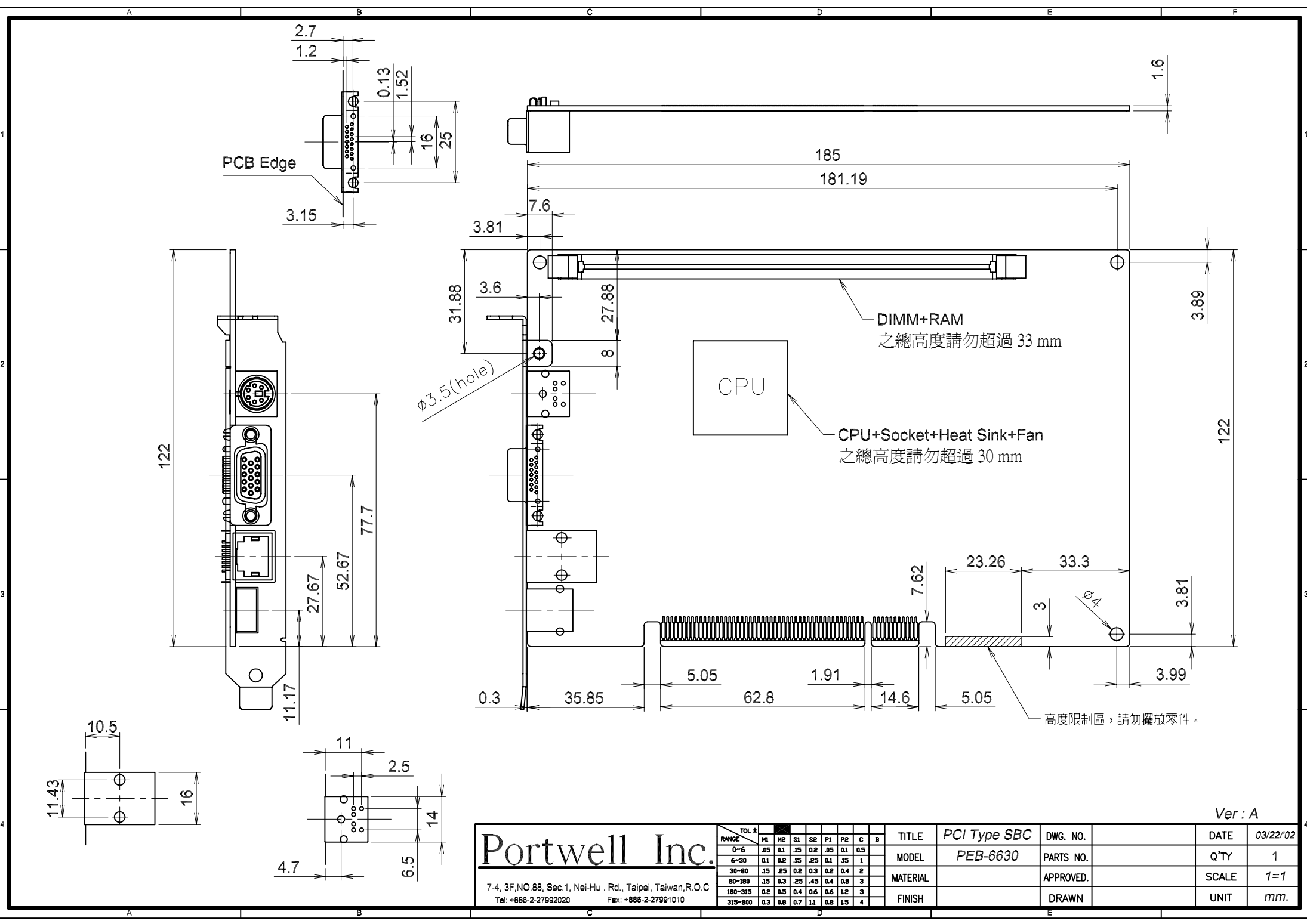
### PEB-6631VLA

- PCI SBC, Based on Intel® low power Pentium® III processor with VGA/LAN/Audio/CF socket

### PEB-6630VLA

- PCI SBC, Based on Intel® low power Celeron® processor with VGA/LAN/Audio/CF socket

ps. Please contact your sales representative for other onfigurations.



Ver : A

**Portwell Inc.**

7-4, 3F, NO.88, Sec.1, Nei-Hu . Rd., Taipei, Taiwan, R.O.C  
Tel: +886-2-27992020 Fax: +886-2-27991010

| RANGE   | TOL ± | H1  | H2  | S1  | S2  | P1  | P2  | C | B |
|---------|-------|-----|-----|-----|-----|-----|-----|---|---|
| 0~6     | .05   | 0.1 | .15 | 0.2 | .05 | 0.1 | 0.5 |   |   |
| 6~30    | 0.1   | 0.2 | .15 | .25 | 0.1 | .15 | 1   |   |   |
| 30~80   | .15   | .25 | 0.2 | 0.3 | 0.2 | 0.4 | 2   |   |   |
| 80~180  | .15   | 0.3 | .25 | .45 | 0.4 | 0.8 | 3   |   |   |
| 180~315 | 0.2   | 0.5 | 0.4 | 0.6 | 0.6 | 1.2 | 3   |   |   |
| 315~800 | 0.3   | 0.8 | 0.7 | 1.1 | 0.8 | 1.5 | 4   |   |   |

| TITLE    | PCI Type SBC | DWG. NO.  | DATE  | 03/22/02 |
|----------|--------------|-----------|-------|----------|
| MODEL    | PEB-6630     | PARTS NO. | Q'TY  | 1        |
| MATERIAL |              | APPROVED. | SCALE | 1=1      |
| FINISH   |              | DRAWN     | UNIT  | mm.      |